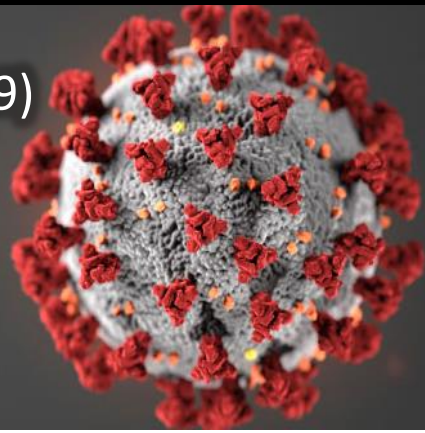


Coronavirus Disease 2019 (COVID-19)

Union County Health Department

Epidemiological Update

June 22, 2020



Community Cases	68
Confirmed Cases	50
Probable Cases	18
Antibody Testing*	7
Long-Term Care Facilities Cases	0
Median Age (Years)	38
Average Age (Years)	38.7
Minimum Age (Years)	<1
Maximum Age (Years)	83
Range of Illness Onset Dates	January 25, 2020 – June 17, 2020
Currently Monitored Contacts	20
Cumulative Number of Contacts	143
Converted from Contact to Case	12
Incarcerated Cases	3

*This only includes antibody testing that has been authorized by the FDA under an emergency use authorization for use by authorized laboratories

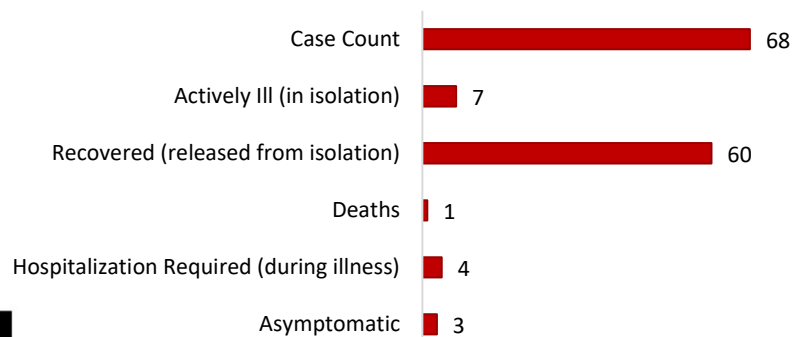
Sex of Cases¹:



¹This information does not include incarcerated cases

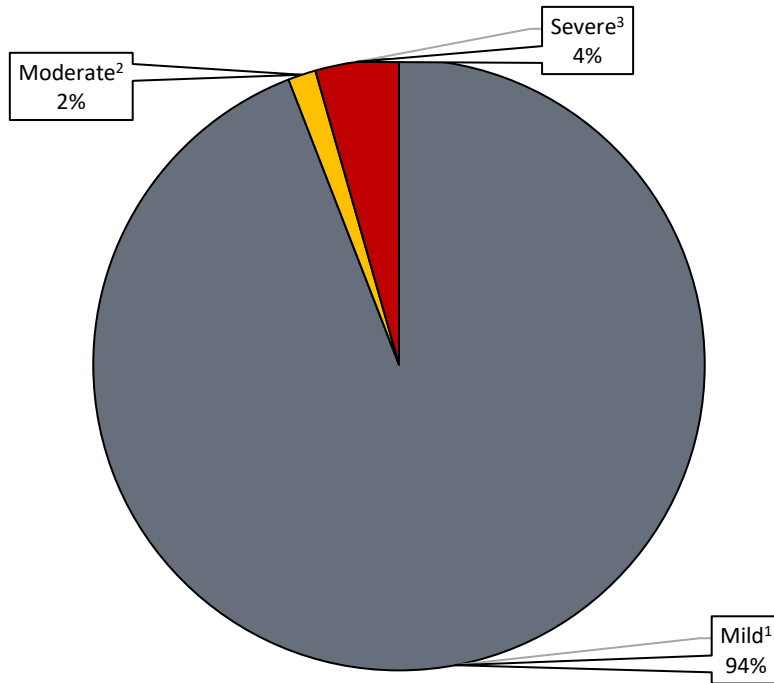


Health Status of Cases¹:



¹This information does not include incarcerated cases

Severity of Illness Among COVID-19 Cases Reported in Union County

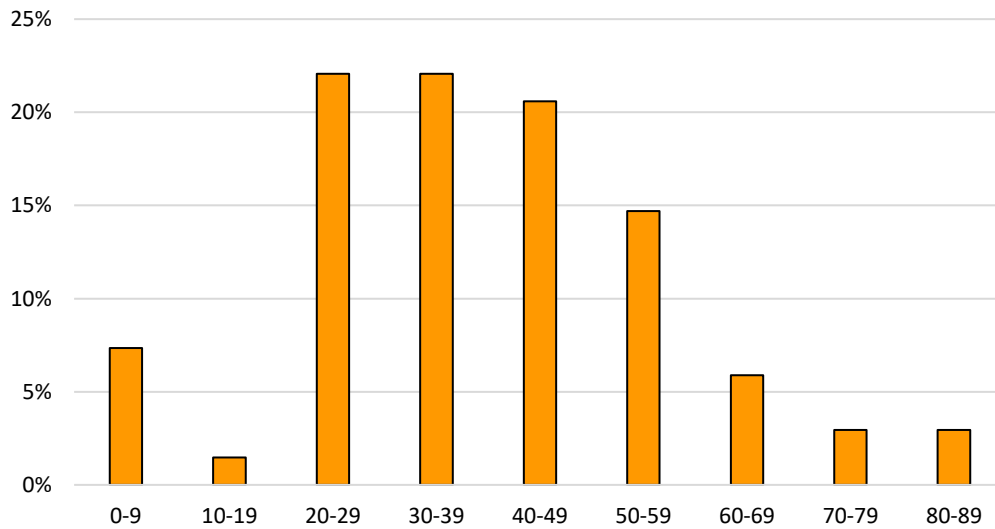


¹Mild illness includes asymptomatic cases as well as those who were able to recover at home

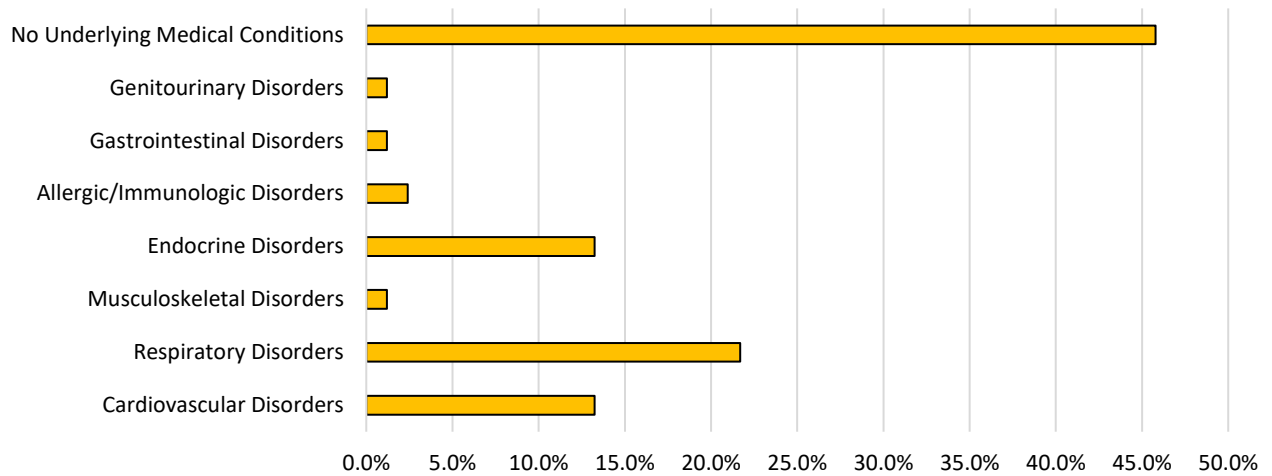
²Moderate illness includes cases who required hospitalization

³Severe illness includes cases who were hospitalized in intensive care or died as a result of their illness

Percentage of Union County COVID-19 Cases by Age Group



Underlying Health Conditions of Union County COVID-19 Cases



¹Genitourinary Disorders include kidney reflux

²Gastrointestinal Disorders include irritable bowel syndrome

³Allergic/Immunologic Disorders

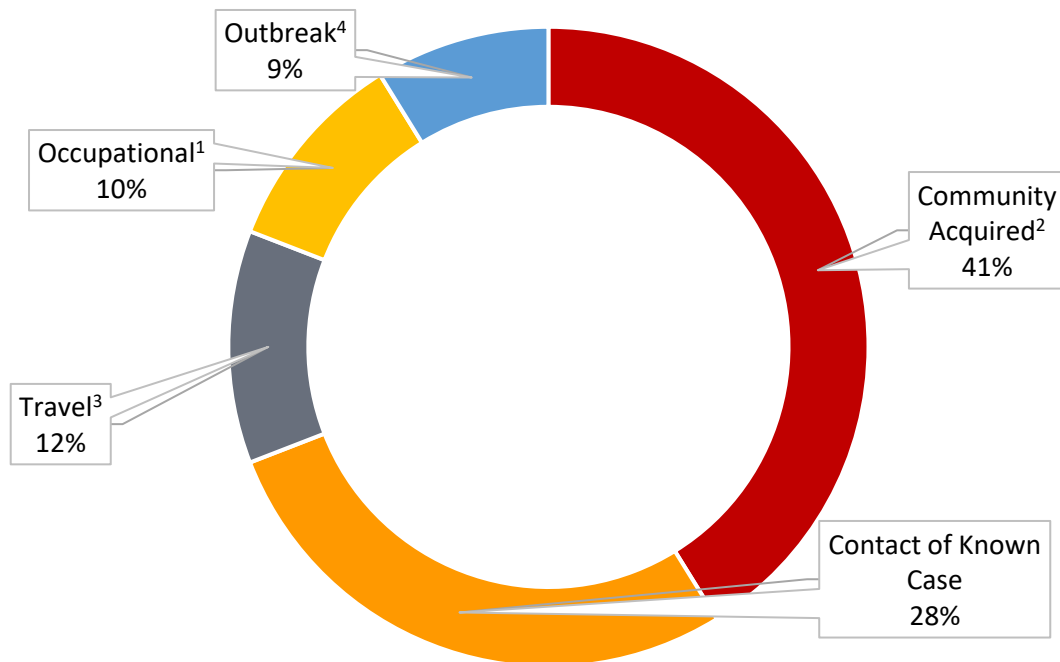
⁴Endocrine Disorders include diabetes, hypothyroidism, PCOS, Addison's Disease, and being obese or overweight

⁵Musculoskeletal Disorders include arthritis

⁶Respiratory Disorders include chronic lung disease (Asthma/Emphysema/COPD/Bronchitis) and being a former or current smoker

⁷Cardiovascular Disorders include atrial fibrillation, hypertension, and sleep apnea

Union County COVID-19 Case Exposures



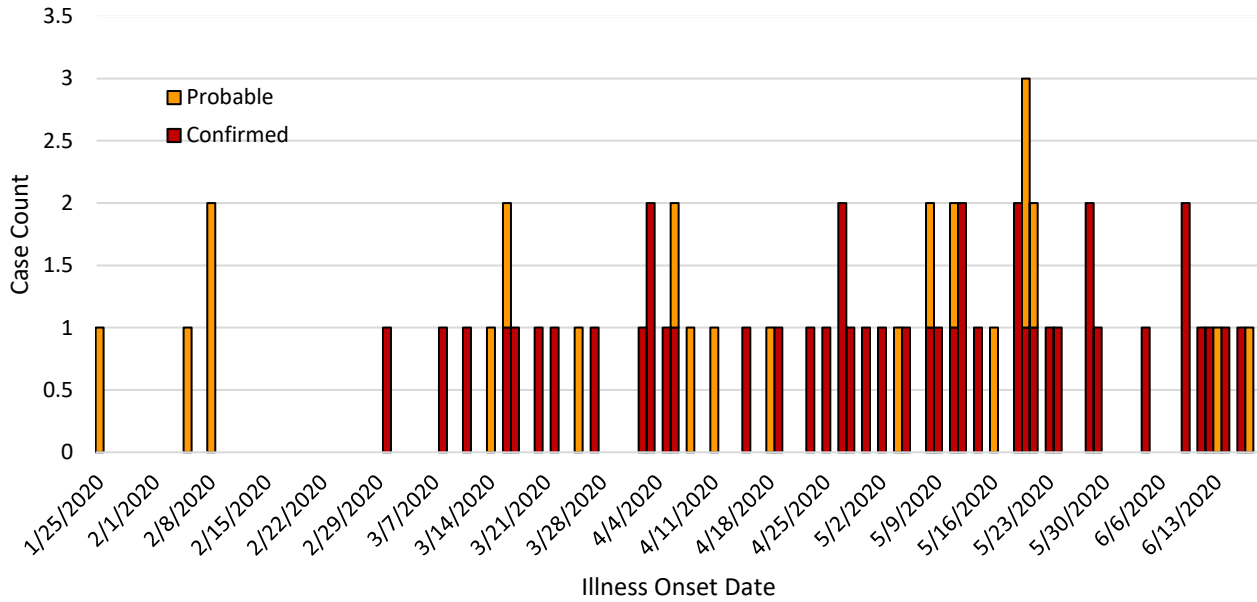
¹Occupational exposures include those working in the following settings: health care, first responder, prison

²Community acquired denotes unknown source of exposure

³Travel associated exposures include those acquired while visiting areas experiencing sustained community spread

⁴Outbreak denotes cases associated with an identified outbreak cluster

Epidemiological Curve of Confirmed and Probable COVID-19 Cases¹ in Union County's Community² by Illness Onset Date



¹Cases for whom an illness onset date is not available are not illustrated. This may be due to the case not yet being interviewed or the case testing positive without experiencing any symptoms.

²This graph does not include illness onset dates on incarcerated cases

To be released from isolation a person must meet the following criteria:

1. Be fever free for at least 72 hours (that is three full days of no fever without the use medicine that reduces fevers)
-AND-
2. Have improvement of symptoms (for example, cough or shortness of breath have improved)
-AND-
3. At least 10 days have passed symptoms first began

For more information please visit: <https://www.cdc.gov/coronavirus/2019-ncov/if-you-are-sick/end-home-isolation.html>

Case Definitions:

Probable: includes the following:

- Individuals experiencing symptoms of COVID-19 who have either traveled to an area experiencing community spread or who are a contact of a laboratory confirmed case
-OR-
- Individuals with a positive antibody result via a test authorized by an FDA under an emergency use authorization and who either were a contact of a laboratory confirmed case or who experienced symptoms of COVID-19

Confirmed: individuals with laboratory confirmation of COVID-19

For more information please visit: https://cdn.ymaws.com/www.cste.org/resource/resmgr/2020ps/interim-20-id-01_covid-19.pdf

Recovered: individuals who are no longer experiencing symptoms or have had improvement of symptoms and who have been released from isolation