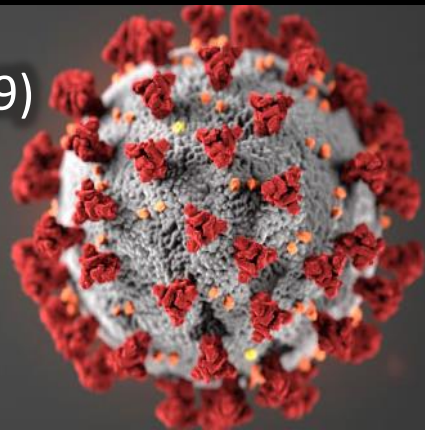


# Coronavirus Disease 2019 (COVID-19)

## Union County Health Department

### Epidemiological Update

July 14, 2020



<b>Community Cases</b>	<b>118</b>
Confirmed Cases	97
Probable Cases	21
Antibody Testing*	9
Long-Term Care Facilities Cases	0
Median Age (Years)	37
Average Age (Years)	39
Minimum Age (Years)	<1
Maximum Age (Years)	89
Range of Illness Onset Dates	January 13, 2020 – July 12, 2020
Currently Monitored Contacts	56
Cumulative Number of Contacts	188
Converted from Contact to Case	18
<b>Incarcerated Cases</b>	<b>3</b>

\*This only includes antibody testing that has been authorized by the FDA under an emergency use authorization for use by authorized laboratories

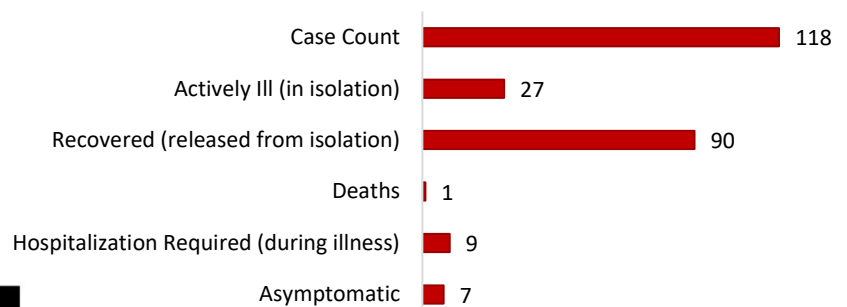
#### Sex of Cases<sup>1</sup>:



<sup>1</sup>This information does not include incarcerated cases

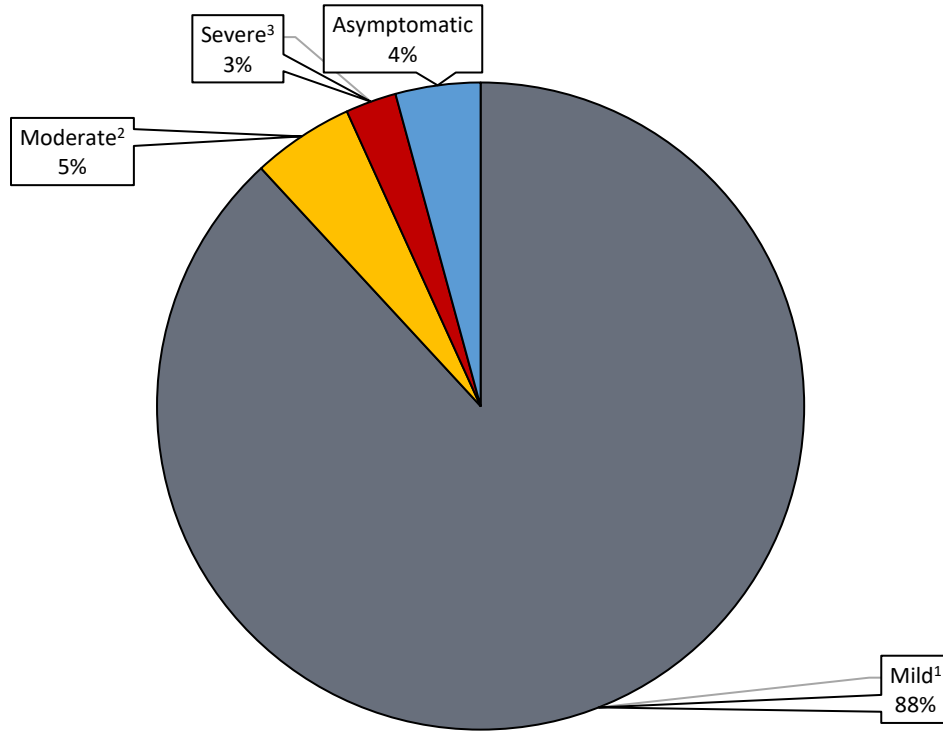


#### Health Status of Cases<sup>1</sup>:



<sup>1</sup>This information does not include incarcerated cases

### Severity of Illness Among COVID-19 Cases Reported in Union County

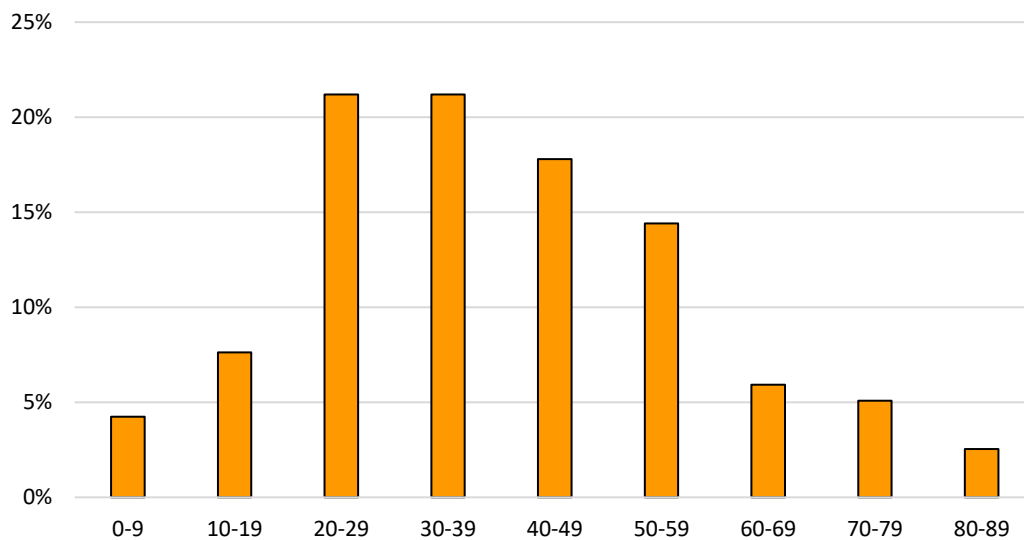


<sup>1</sup>Mild illness includes those who were able to recover at home

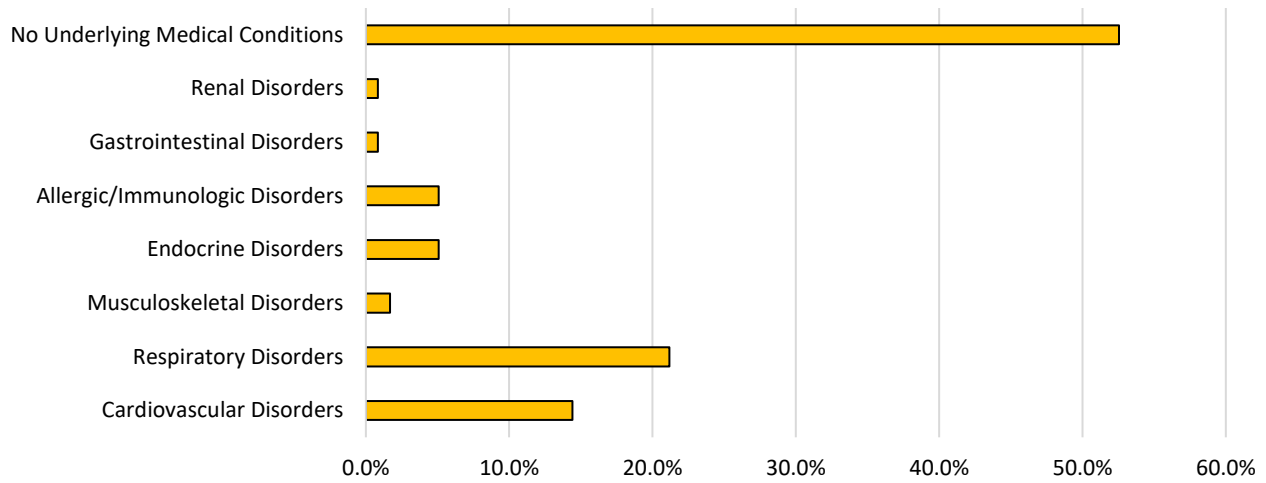
<sup>2</sup>Moderate illness includes cases who required hospitalization

<sup>3</sup>Severe illness includes cases who were hospitalized in intensive care, were intubated, or died as a result of their illness

### Percentage of Union County COVID-19 Cases by Age Group



## Underlying Health Conditions of Union County COVID-19 Cases



Renal Disorders include kidney reflux

Gastrointestinal Disorders include irritable bowel syndrome

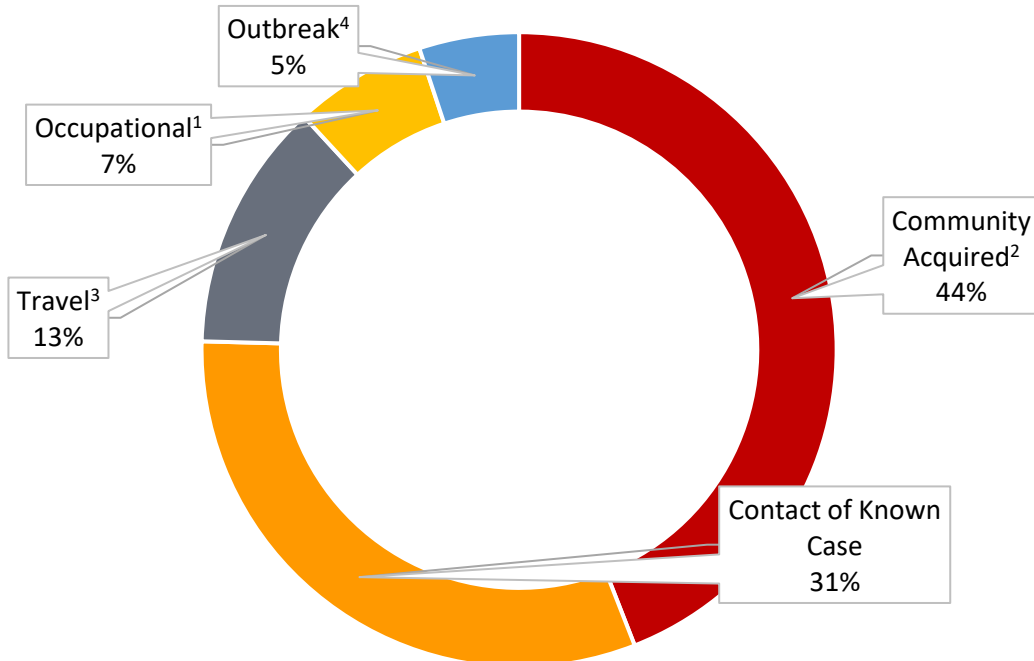
Endocrine Disorders include diabetes, hypothyroidism, PCOS, Addison's Disease, and being obese or overweight

Musculoskeletal Disorders include arthritis

Respiratory Disorders include chronic lung disease (Asthma/Emphysema/COPD/Bronchitis) and being a former or current smoker

Cardiovascular Disorders include atrial fibrillation, hypertension, and sleep apnea

## Union County COVID-19 Case Exposures



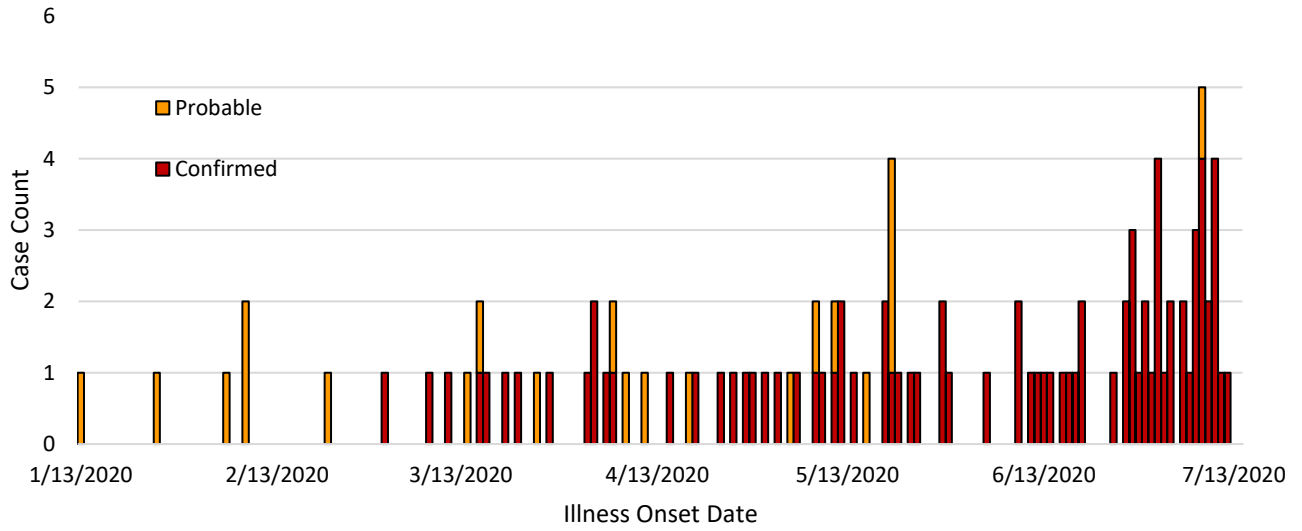
<sup>1</sup>Occupational exposures include those working in the following settings: health care, first responder, prison

<sup>2</sup>Community acquired denotes unknown source of exposure

<sup>3</sup>Travel associated exposures include those acquired while visiting areas experiencing sustained community spread

<sup>4</sup>Outbreak denotes cases associated with an identified outbreak cluster

## Epidemiological Curve of Confirmed and Probable COVID-19 Cases<sup>1</sup> in Union County's Community<sup>2</sup> by Illness Onset Date



<sup>1</sup>Cases for whom an illness onset date is not available are not illustrated. This may be due to the case not yet being interviewed or the case testing positive without experiencing any symptoms.

<sup>2</sup>This graph does not include illness onset dates on incarcerated cases

**To be released from isolation a person must meet the following criteria:**

1. Be fever free for at least 72 hours (that is three full days of no fever without the use medicine that reduces fevers)  
-AND-
2. Have improvement of symptoms (for example, cough or shortness of breath have improved)  
-AND-
3. At least 10 days have passed symptoms first began

For more information please visit: <https://www.cdc.gov/coronavirus/2019-ncov/if-you-are-sick/end-home-isolation.html>

**Case Definitions:**

Probable: includes the following:

- Individuals experiencing symptoms of COVID-19 who have either traveled to an area experiencing community spread or who are a contact of a laboratory confirmed case  
-OR-
- Individuals with a positive antibody result via a test authorized by an FDA under an emergency use authorization and who either were a contact of a laboratory confirmed case or who experienced symptoms of COVID-19

Confirmed: individuals with laboratory confirmation of COVID-19

For more information please visit: [https://cdn.ymaws.com/www.cste.org/resource/resmgr/2020ps/interim-20-id-01\\_covid-19.pdf](https://cdn.ymaws.com/www.cste.org/resource/resmgr/2020ps/interim-20-id-01_covid-19.pdf)

Recovered: individuals who are no longer experiencing symptoms or have had improvement of symptoms and who have been released from isolation