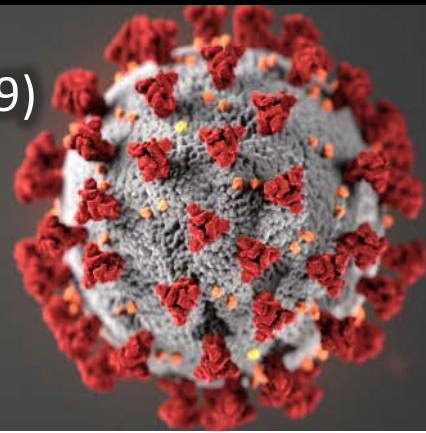


Coronavirus Disease 2019 (COVID-19)

Union County Health Department

Epidemiological Update

August 10, 2020



Community Cases	238
Confirmed Cases	196
Probable Cases	42
Antibody Testing ¹	16
Antigen Testing ²	2
Case Rate ³	455 cases/100,000 residents
Long-Term Care Facilities Cases	3
Median Age (Years)	40
Average Age (Years)	40.2
Minimum Age (Years)	<1
Maximum Age (Years)	89
Range of Illness Onset Dates	January 13, 2020 – August 6, 2020
Currently Monitored Contacts	50
Cumulative Number of Contacts	402
Converted from Contact to Case	58
Incarcerated Cases	14
¹ This only includes antibody testing that has been authorized by the FDA under an emergency use authorization for use by authorized laboratories ² This only includes antigen testing that has been authorized by the FDA under an emergency use authorization for use by authorized laboratories ³ The case rate is defined as the number of COVID-19 cases divided by the Union County population reported in the 2010 U.S. Census	

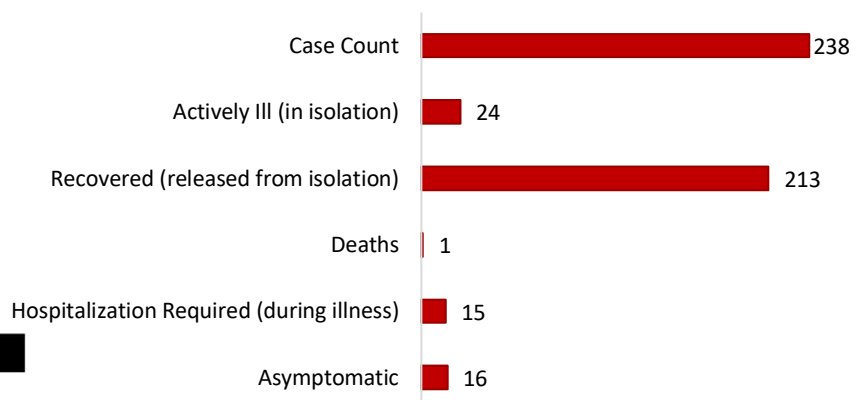
Sex of Cases¹:



¹This information does not include incarcerated cases



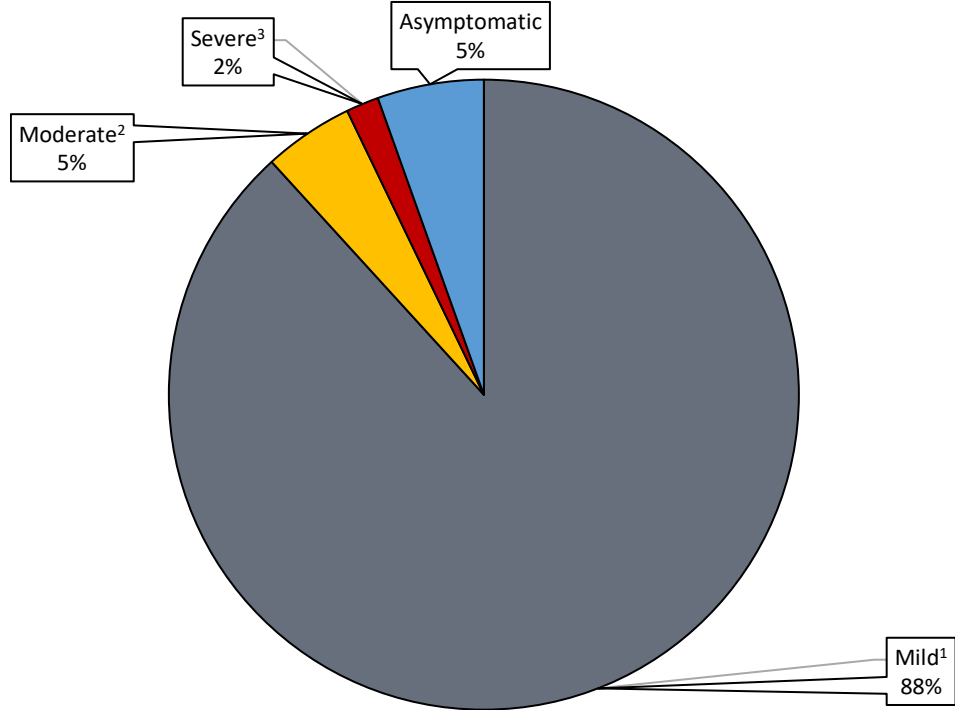
Health Status of Cases¹:



¹This information does not include incarcerated cases

This data was collected at 2:30 PM on 8/10/2020

Severity of Illness Among COVID-19 Cases Reported in Union County

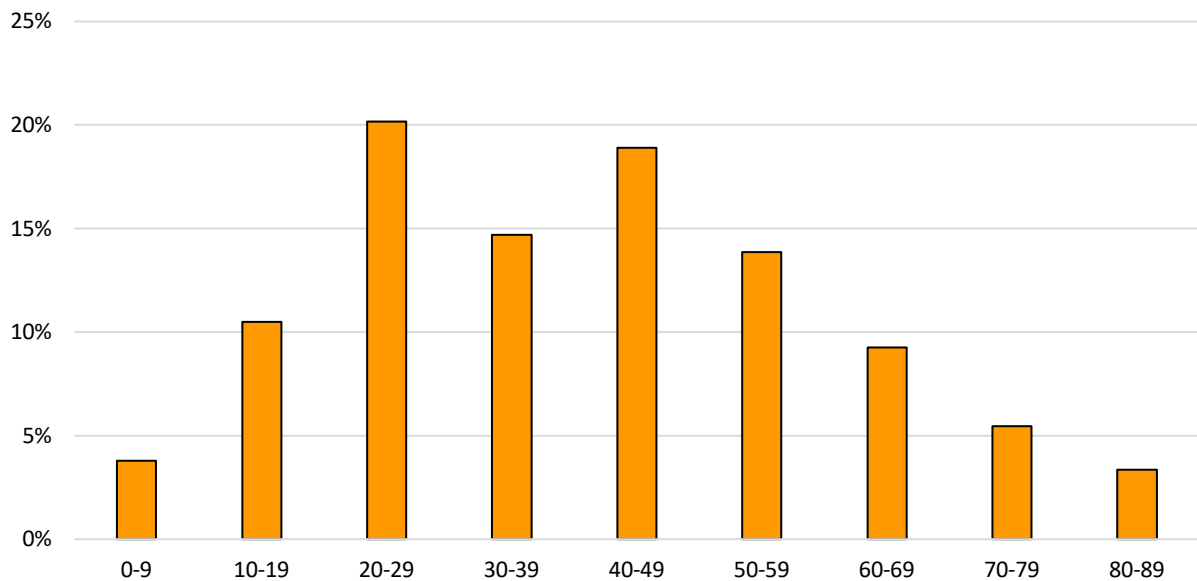


¹Mild illness includes those who were able to recover at home

²Moderate illness includes cases who required hospitalization

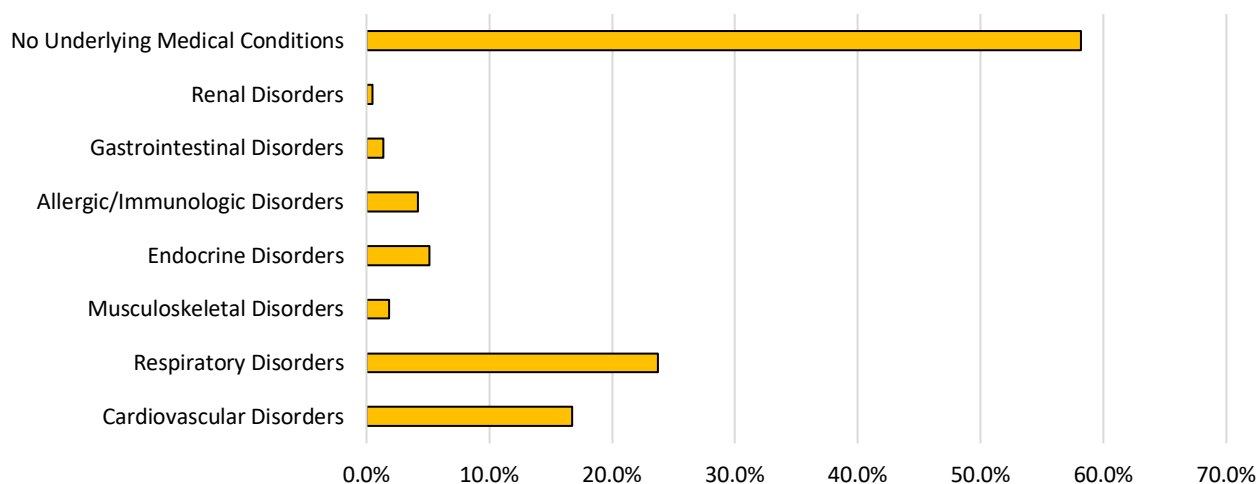
³Severe illness includes cases who were hospitalized in intensive care, were intubated, or died as a result of their illness

Percentage of Union County COVID-19 Cases by Age Group



This data was collected at 2:30 PM on 8/10/2020

Underlying Health Conditions of Union County COVID-19 Cases



Renal Disorders include kidney reflux

Gastrointestinal Disorders include irritable bowel syndrome

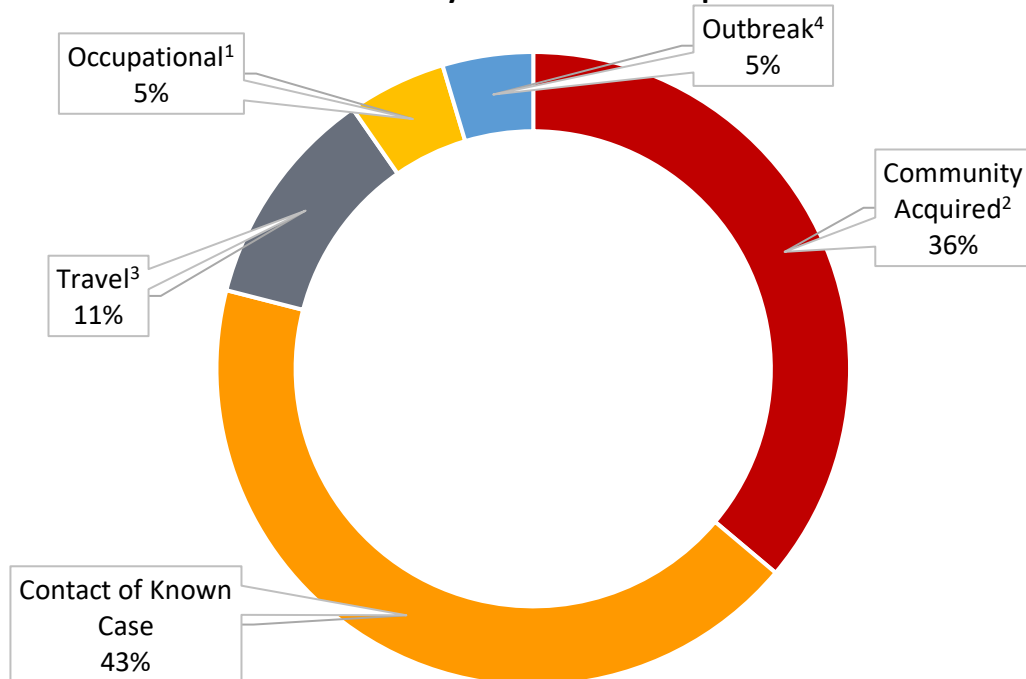
Endocrine Disorders include diabetes, hypothyroidism, PCOS, Addison's Disease, and being obese or overweight

Musculoskeletal Disorders include arthritis

Respiratory Disorders include chronic lung disease (Asthma/Emphysema/COPD/Bronchitis) and being a former or current smoker

Cardiovascular Disorders include atrial fibrillation, hypertension, and sleep apnea

Union County COVID-19 Case Exposures



¹Occupational exposures include those working in the following settings: health care, first responder, prison

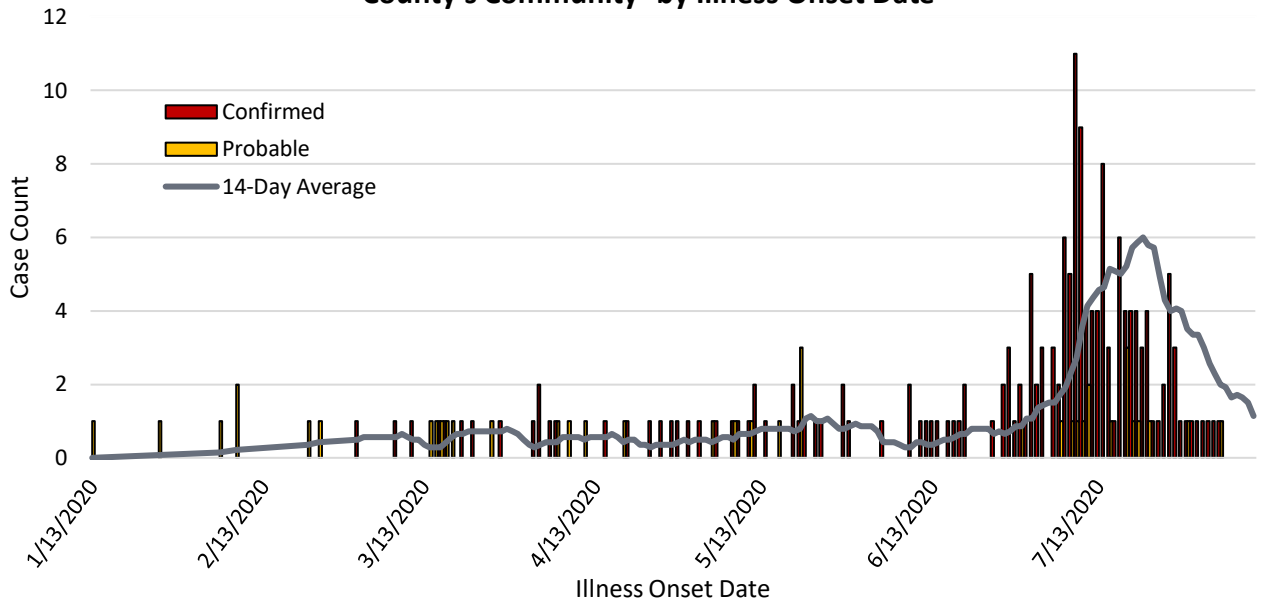
²Community acquired denotes unknown source of exposure

³Travel associated exposures include those acquired while visiting areas experiencing sustained community spread

⁴Outbreak denotes cases associated with an identified outbreak cluster

This data was collected at 2:30 PM on 8/10/2020

Epidemiological Curve of Confirmed and Probable COVID-19 Cases¹ in Union County's Community² by Illness Onset Date



¹Cases for whom an illness onset date is not available are not illustrated. This may be due to the case not yet being interviewed or the case testing positive without experiencing any symptoms.

²This graph does not include illness onset dates on incarcerated cases

³14-day average is the average number of cases with illness onset occurring in the previous two-week period

To be released from isolation a person must meet the following criteria:

1. Be fever free for at least 24 hours without the use of medicine that reduces fevers
-AND-
2. Have improvement of symptoms (for example, cough or shortness of breath have improved)
-AND-
3. At least 10 days have passed symptoms first began

For more information please visit: <https://www.cdc.gov/coronavirus/2019-ncov/if-you-are-sick/end-home-isolation.html>

Case Definitions:

Probable: includes the following:

- Individuals experiencing symptoms of COVID-19 who have either traveled to an area experiencing community spread or who are a contact of a laboratory confirmed case
-OR-
- Individuals with a positive antibody or antigen result via a test authorized by an FDA under an emergency use authorization and who either were a contact of a laboratory confirmed case or who experienced symptoms of COVID-19

Confirmed: individuals with laboratory confirmation of COVID-19

For more information please visit: https://cdn.ymaws.com/www.cste.org/resource/resmgr/2020ps/interim-20-id-01_covid-19.pdf

Recovered: individuals who are no longer experiencing symptoms or have had improvement of symptoms and who have been released from isolation

