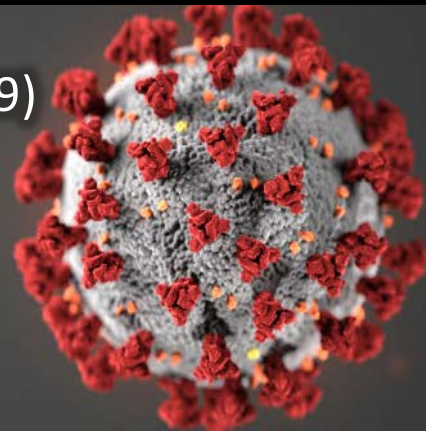


# Coronavirus Disease 2019 (COVID-19)

## Union County Health Department

### Epidemiological Update

March 19, 2021



<b>Community Cases</b>	<b>4,823</b>
Confirmed Cases	3,793
Probable Cases	1,030
Case Rate <sup>1</sup>	9,224 cases/100,000 residents
Median Age (Years)	41
Average Age (Years)	41.7
Minimum Age (Years)	<1
Maximum Age (Years)	98
Range of Illness Onset Dates	January 13, 2020 –March 17, 2021
<b>Incarcerated Cases</b>	<b>437</b>

<sup>1</sup>The case rate is defined as the number of COVID-19 cases divided by the Union County population reported in the 2010 U.S. Census

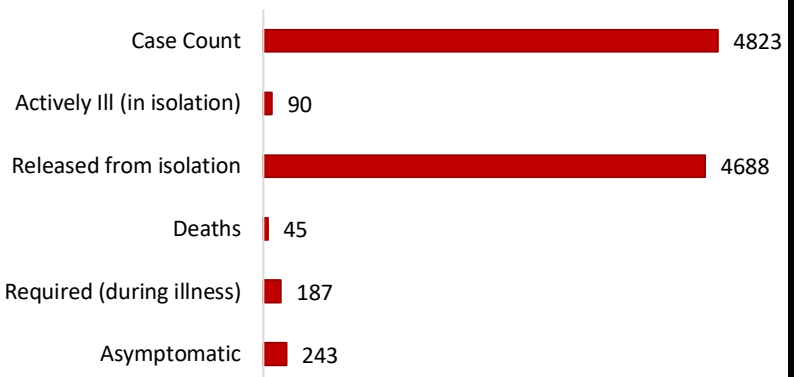
#### Sex of Cases<sup>1</sup>:



<sup>1</sup>This information does not include incarcerated cases



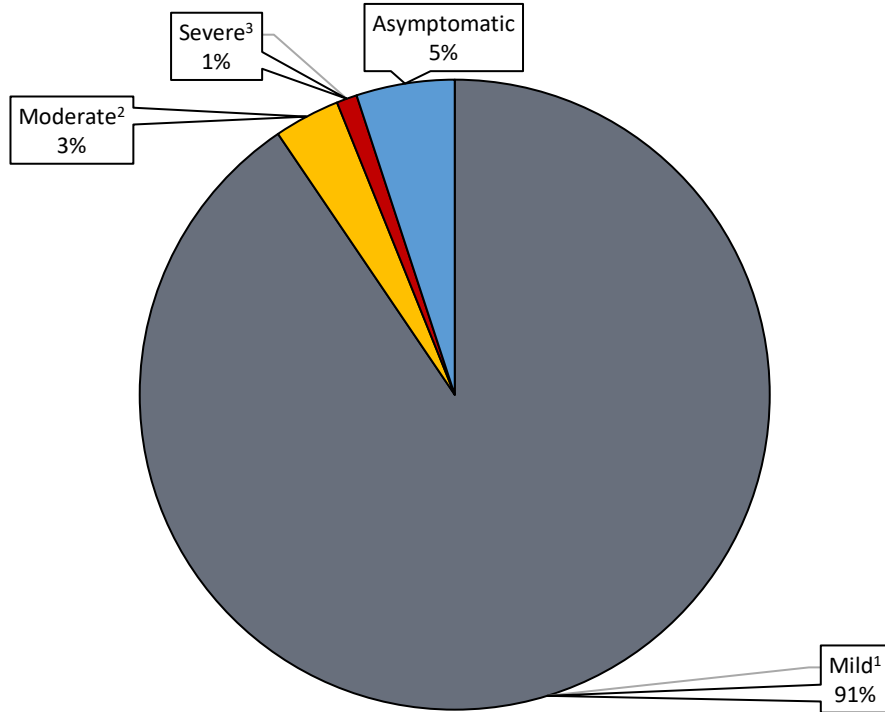
#### Health Status of Cases<sup>1</sup>:



<sup>1</sup>This information does not include incarcerated cases

This data was collected at 3:00 PM on 3/19/2021

### Severity of Illness Among COVID-19 Cases Reported in Union County

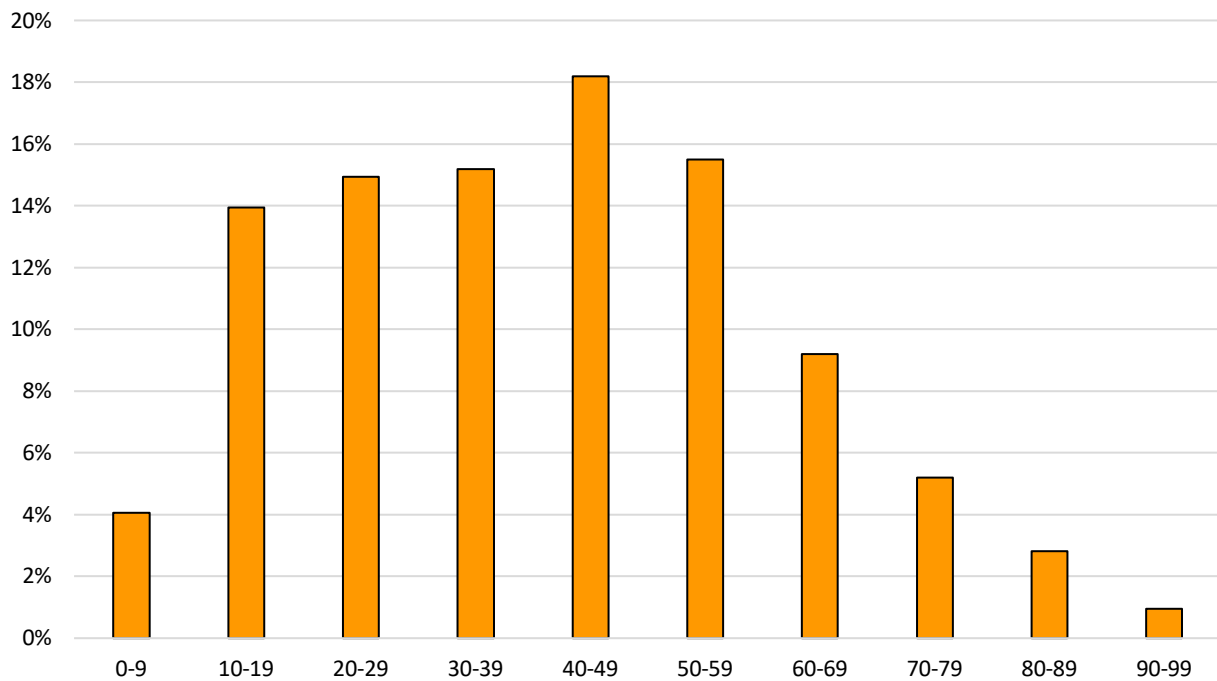


<sup>1</sup>Mild illness includes those who were able to recover at home

<sup>2</sup>Moderate illness includes cases who required hospitalization

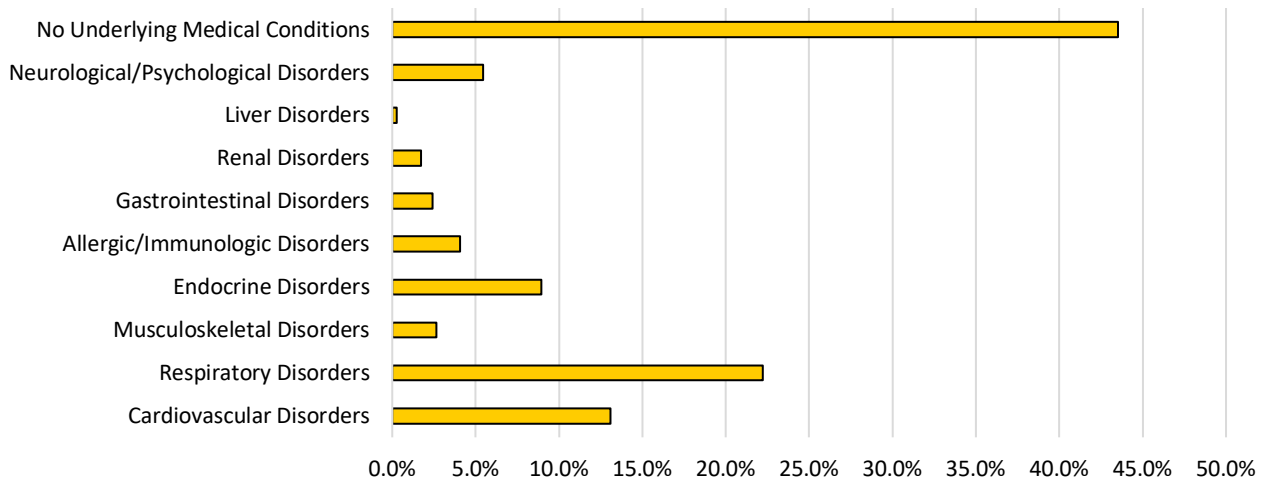
<sup>3</sup>Severe illness includes cases who were hospitalized in intensive care, were intubated, or died as a result of their illness

### Percentage of Union County COVID-19 Cases by Age Group



This data was collected at 3:00 PM on 3/19/2021

## Underlying Health Conditions of Union County COVID-19 Cases



Neurological/Psychology Disorders include Parkinson's disease, epilepsy, Alzheimer's disease, dementia, ADHD, narcolepsy, stroke, depression, and anxiety

Liver Disorders include hepatitis

Renal Disorders include kidney reflux and kidney disease

Gastrointestinal Disorders include irritable bowel syndrome, Chron's disease, reflux

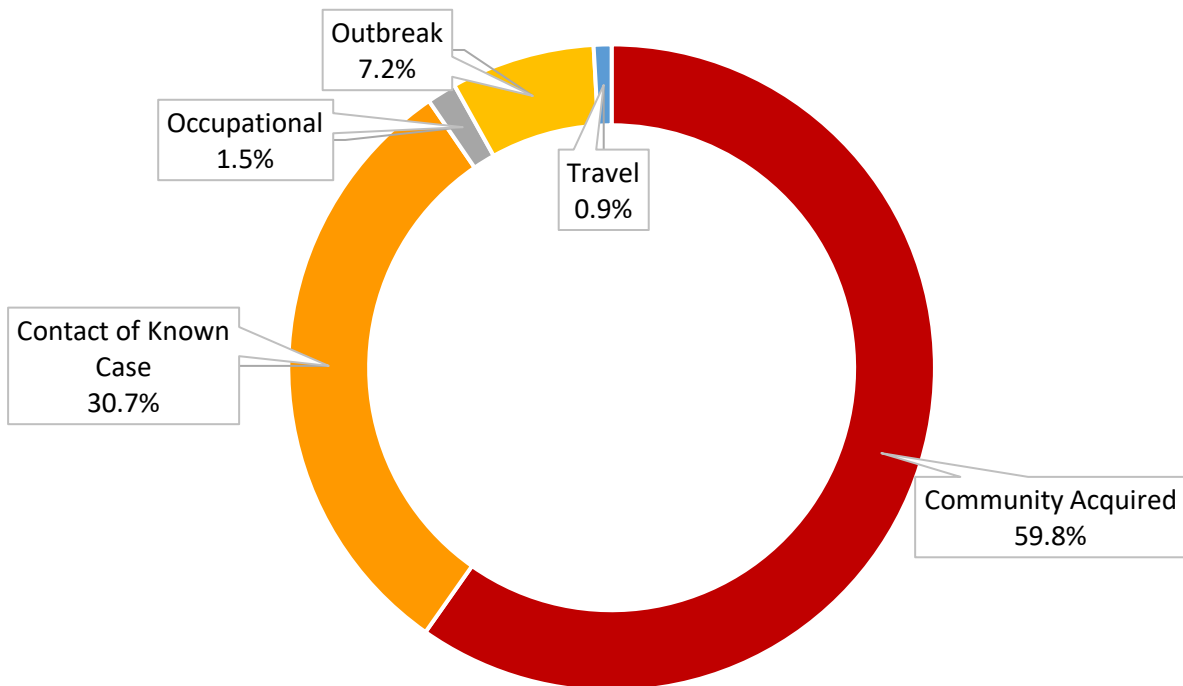
Endocrine Disorders include diabetes, hypothyroidism, PCOS, Addison's Disease, and being obese or overweight

Musculoskeletal Disorders include arthritis and fibromyalgia

Respiratory Disorders include chronic lung disease (Asthma/Emphysema/COPD/Bronchitis) and being a former or current smoker

Cardiovascular Disorders include atrial fibrillation, hypertension, heart disease, and sleep apnea

## Union County COVID-19 Case Exposures



<sup>1</sup>Occupational exposures include those working in the following settings: health care, first responder, prison

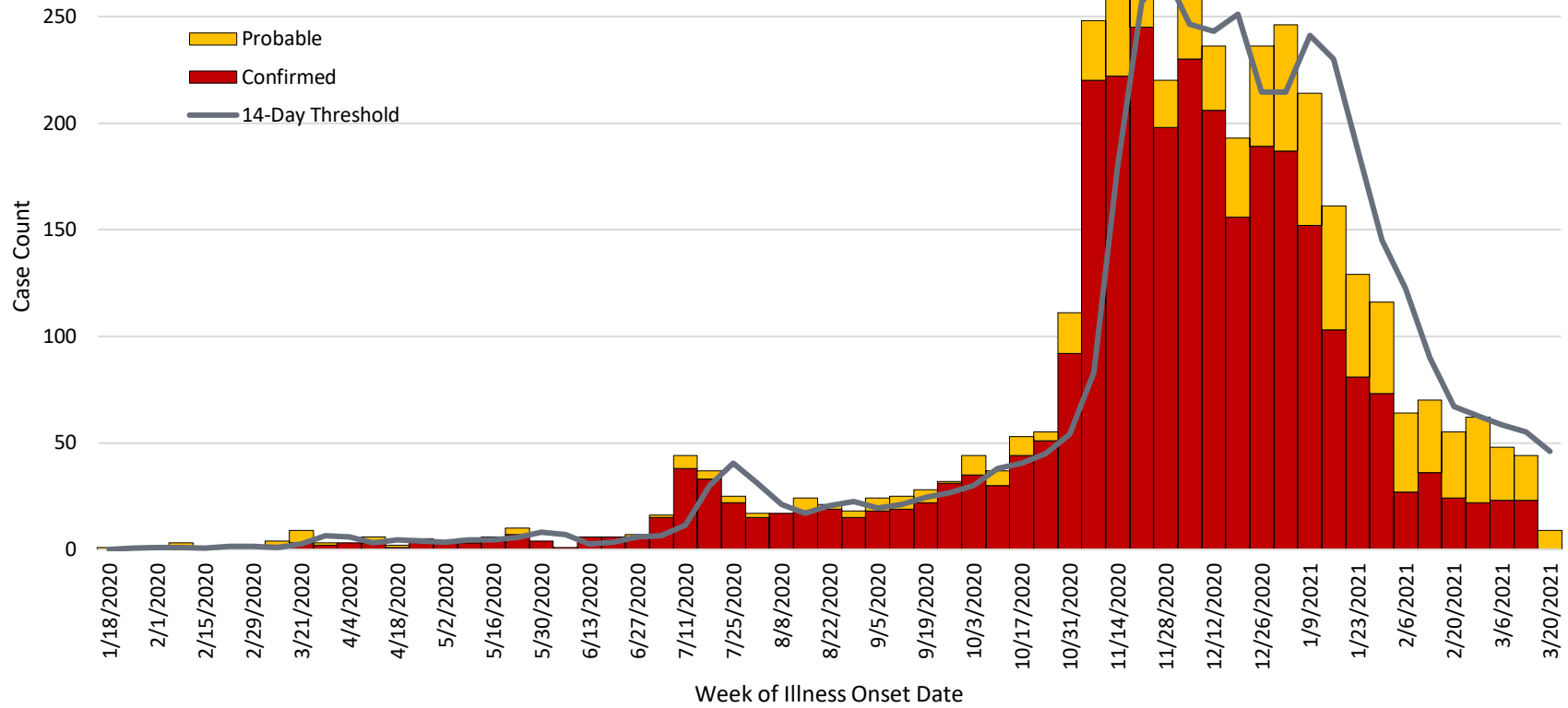
<sup>2</sup>Community acquired denotes unknown source of exposure

<sup>3</sup>Travel associated exposures include those acquired while visiting areas experiencing sustained community spread

<sup>4</sup>Outbreak denotes cases associated with an identified outbreak cluster

This data was collected at 3:00 PM on 3/19/2021

## Epidemiological Curve of Confirmed and Probable COVID-19 Cases<sup>1</sup> in Union County's Community<sup>2</sup> by Week of Illness Onset Date



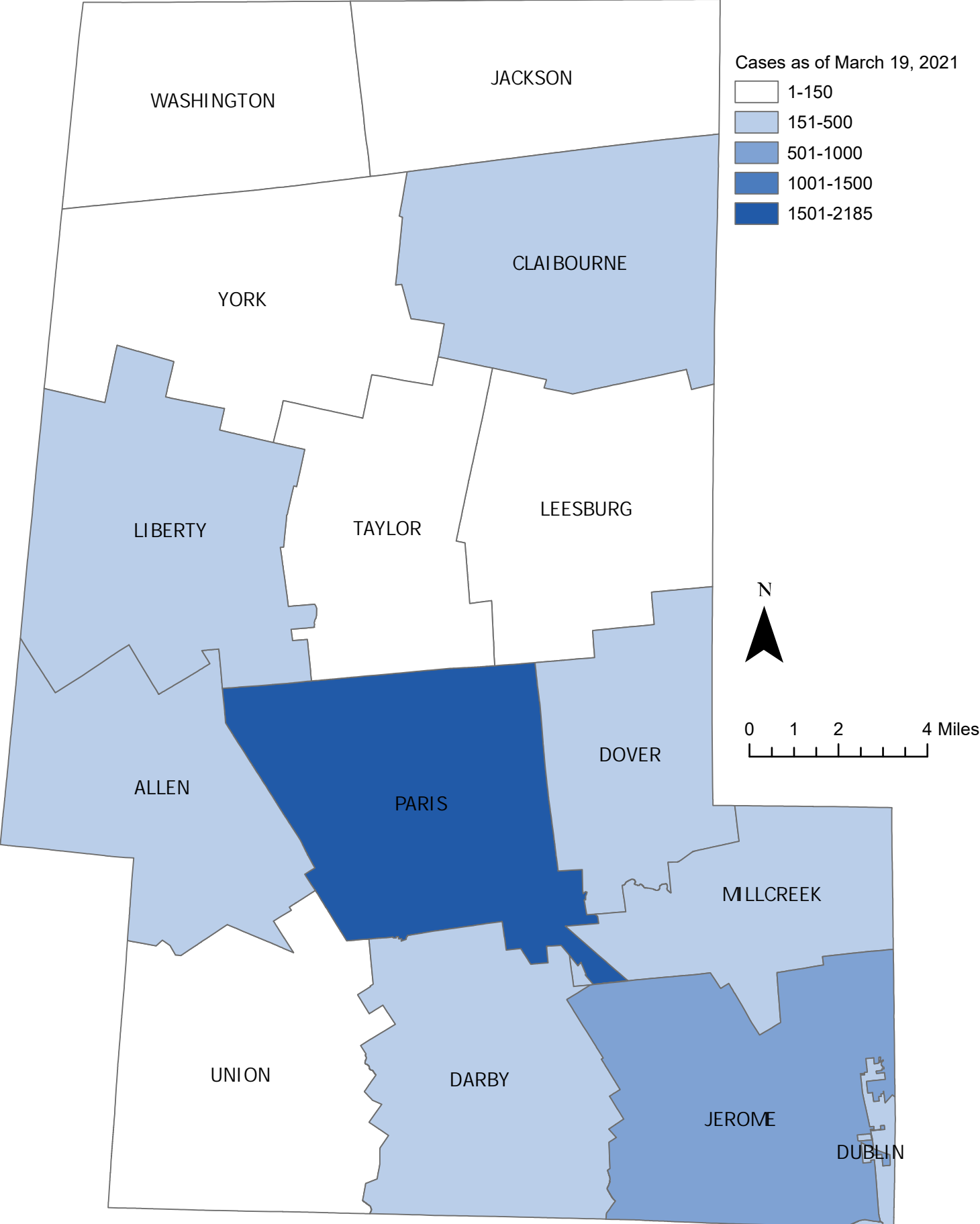
<sup>1</sup> Cases for whom an illness onset date is not available are not illustrated. This may be due to the case not yet being interviewed or the case testing positive without experiencing any symptoms.

<sup>2</sup> This graph does not include illness onset dates on incarcerated cases

<sup>3</sup> 14-day average is the average number of cases with illness onset occurring in the previous two-week period

This data was collected at 3:00 PM on 3/19/2021

# Union County Cumulative COVID-19 Cases by Township of Residence



**To be released from isolation a person must meet the following criteria:**

1. Be fever free for at least 24 hours without the use of medicine that reduces fevers  
-AND-
2. Have improvement of symptoms (for example, cough or shortness of breath have improved)  
-AND-
3. At least 10 days have passed symptoms first began

For more information please visit: <https://www.cdc.gov/coronavirus/2019-ncov/if-you-are-sick/end-home-isolation.html>

**Case Definitions:**

Probable: includes the following:

- Individuals experiencing symptoms of COVID-19 who have either traveled to an area experiencing community spread or who are a contact of a laboratory confirmed case  
-OR-
- Individuals with a positive antigen result via a test authorized by an FDA under an emergency use authorization

Confirmed: individuals with laboratory confirmation of COVID-19, which is detection of SARS-CoV-2 RNA in a clinical or autopsy specimen using a molecular amplification detection test

For more information please visit: [https://cdn.ymaws.com/www.cste.org/resource/resmgr/2020ps/interim-20-id-01\\_covid-19.pdf](https://cdn.ymaws.com/www.cste.org/resource/resmgr/2020ps/interim-20-id-01_covid-19.pdf)

Recovered: individuals who are no longer experiencing symptoms or have had improvement of symptoms and who have been released from isolation

