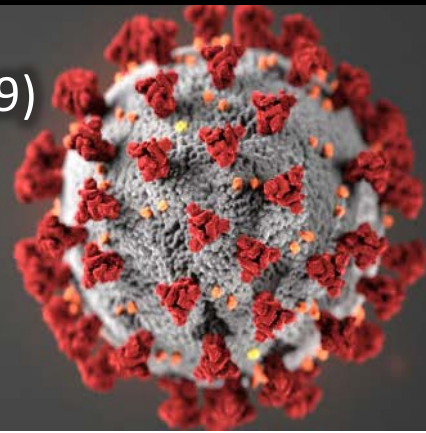


Coronavirus Disease 2019 (COVID-19)

Union County Health Department

Epidemiological Update

July 29, 2021



Community Cases	5,364
Confirmed Cases	4,088
Probable Cases	1,276
Case Rate ¹	10,256 cases/100,000 residents
Median Age (Years)	40
Average Age (Years)	40.2
Minimum Age (Years)	<1
Maximum Age (Years)	98
Range of Illness Onset Dates	January 13, 2020 – July 27, 2021
Incarcerated Cases	510

¹The case rate is defined as the number of COVID-19 cases divided by the Union County population reported in the 2010 U.S. Census

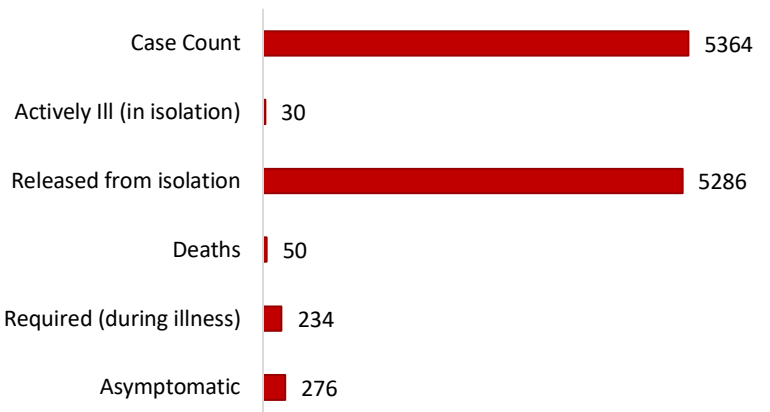
Sex of Cases¹:



¹This information does not include incarcerated cases



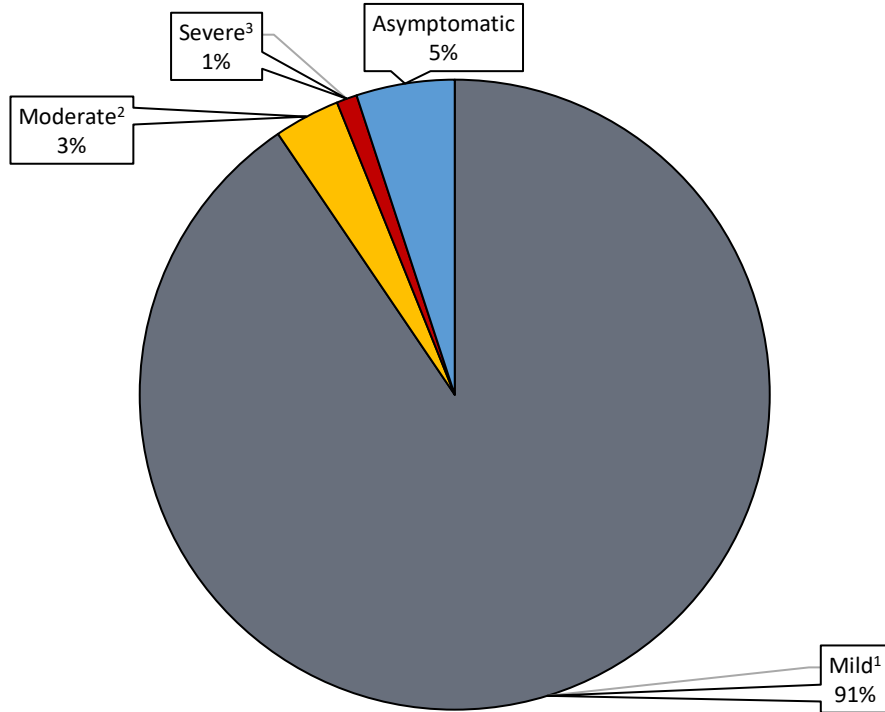
Health Status of Cases¹:



¹This information does not include incarcerated cases

This data was collected at 10:30 AM on 7/29/2021

Severity of Illness Among COVID-19 Cases Reported in Union County

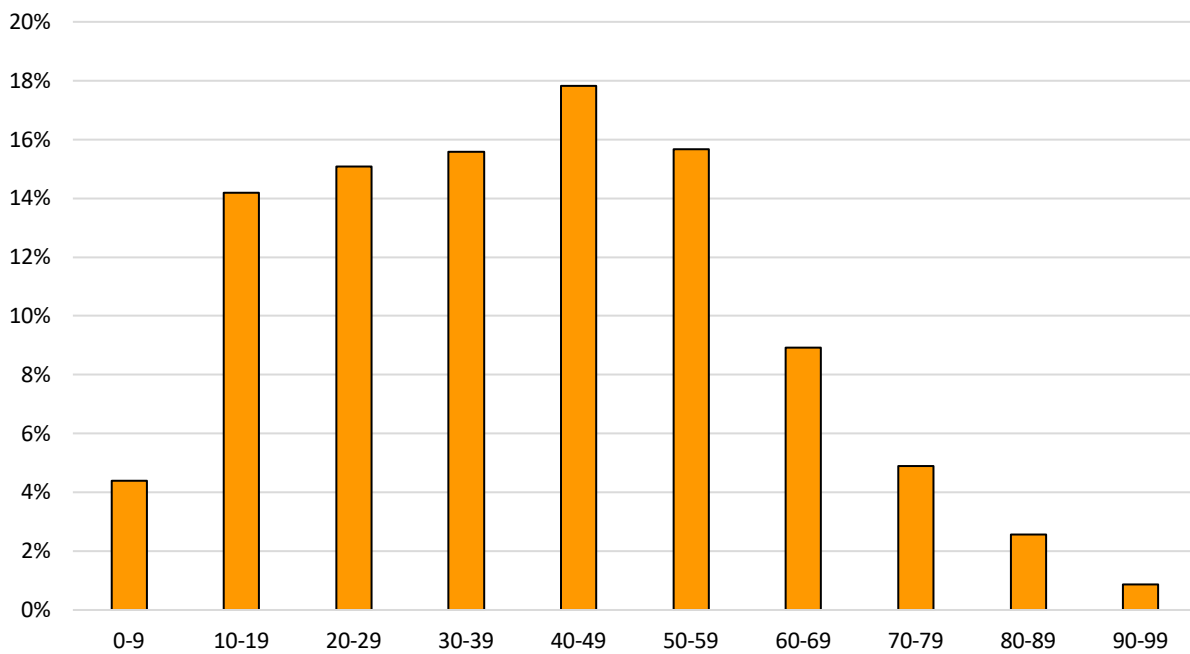


¹Mild illness includes those who were able to recover at home

²Moderate illness includes cases who required hospitalization

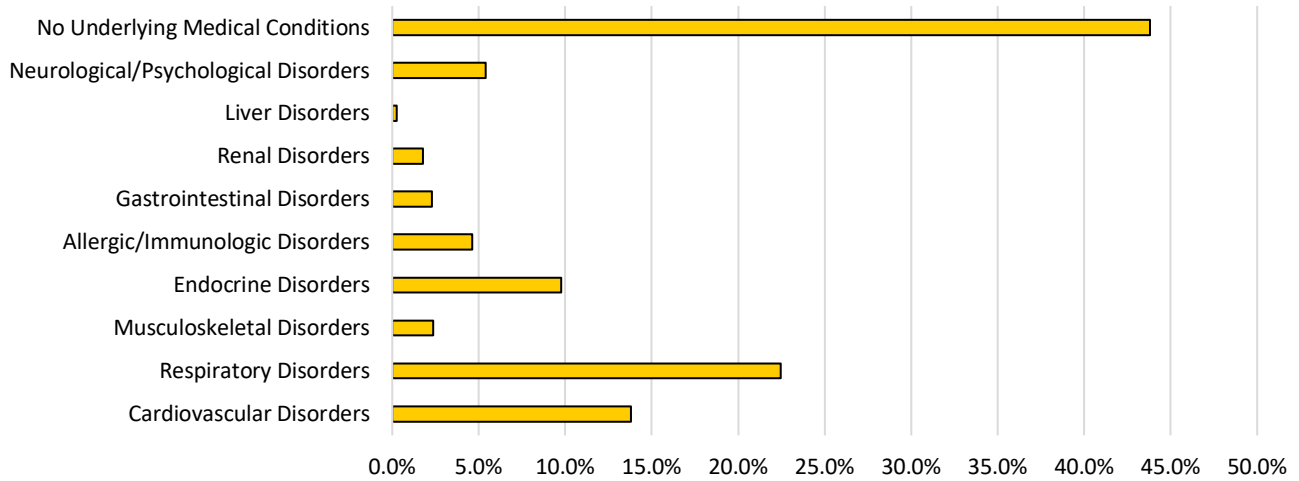
³Severe illness includes cases who were hospitalized in intensive care, were intubated, or died as a result of their illness

Percentage of Union County COVID-19 Cases by Age Group



This data was collected at 10:30 AM on 7/29/2021

Underlying Health Conditions of Union County COVID-19 Cases



Neurological/Psychology Disorders include Parkinson's disease, epilepsy, Alzheimer's disease, dementia, ADHD, narcolepsy, stroke, depression, and anxiety

Liver Disorders include hepatitis

Renal Disorders include kidney reflux and kidney disease

Gastrointestinal Disorders include irritable bowel syndrome, Chron's disease, reflux

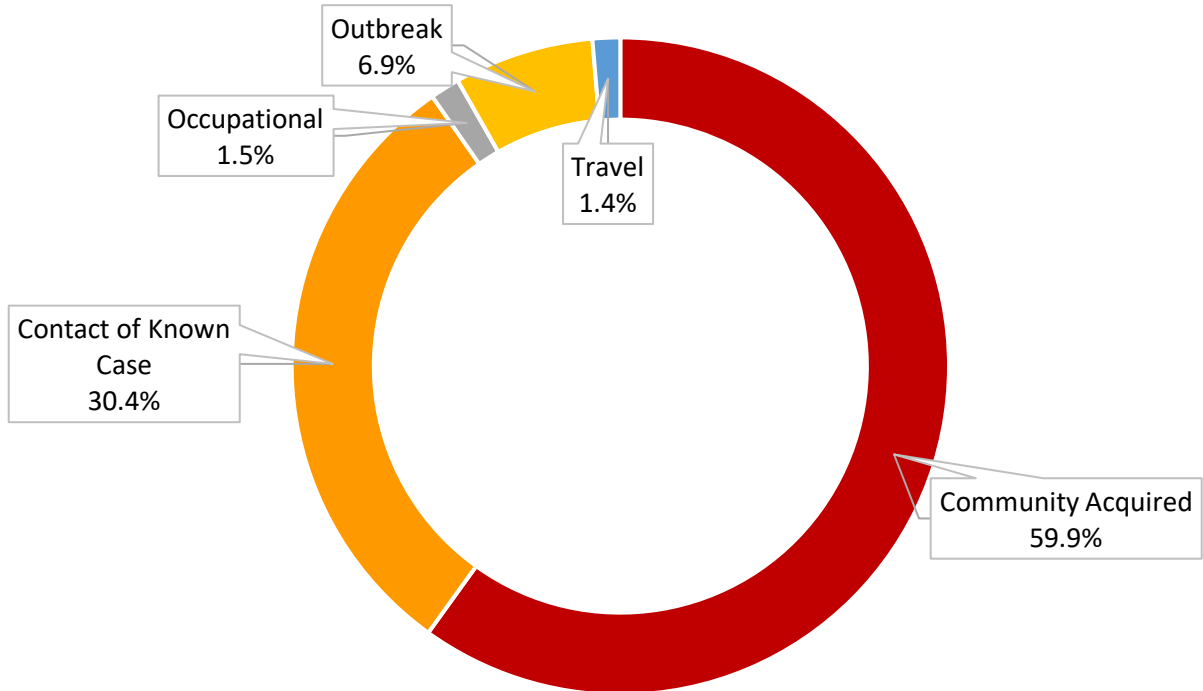
Endocrine Disorders include diabetes, hypothyroidism, PCOS, Addison's Disease, and being obese or overweight

Musculoskeletal Disorders include arthritis and fibromyalgia

Respiratory Disorders include chronic lung disease (Asthma/Emphysema/COPD/Bronchitis) and being a former or current smoker

Cardiovascular Disorders include atrial fibrillation, hypertension, heart disease, and sleep apnea

Union County COVID-19 Case Exposures



¹Occupational exposures include those working in the following settings: health care, first responder, prison

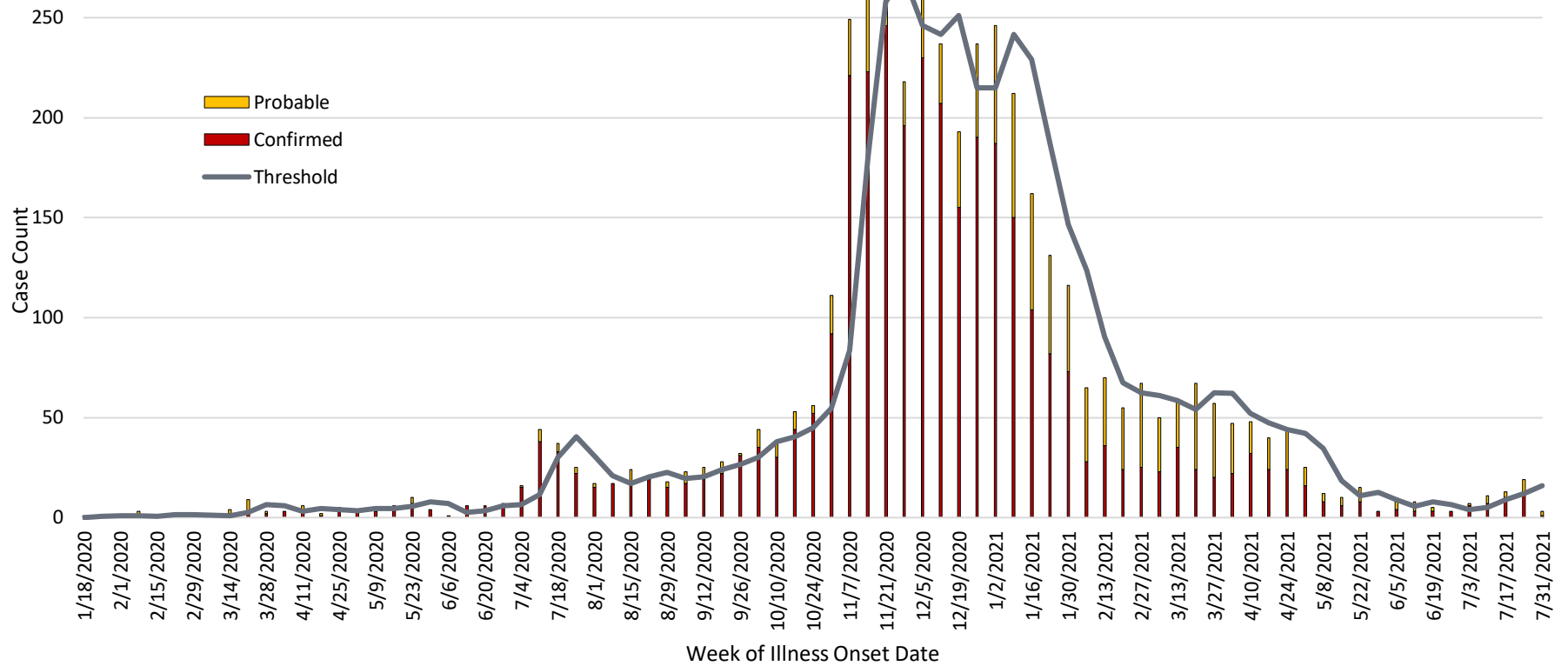
²Community acquired denotes unknown source of exposure

³Travel associated exposures include those acquired while visiting areas experiencing sustained community spread

⁴Oubreak denotes cases associated with an identified outbreak cluster

This data was collected at 10:30 AM on 7/29/2021

Epidemiological Curve of Confirmed and Probable COVID-19 Cases¹ in Union County's Community² by Week of Illness Onset Date



¹ Cases for whom an illness onset date is not available are not illustrated. This may be due to the case not yet being interviewed or the case testing positive without experiencing any symptoms.

² This graph does not include illness onset dates on incarcerated cases

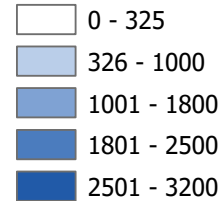
³ 14-day average is the average number of cases with illness onset occurring in the previous two-week period

This data was collected at 10:30 AM on 7/29/2021

Union County Cumulative COVID-19 Cases by School District

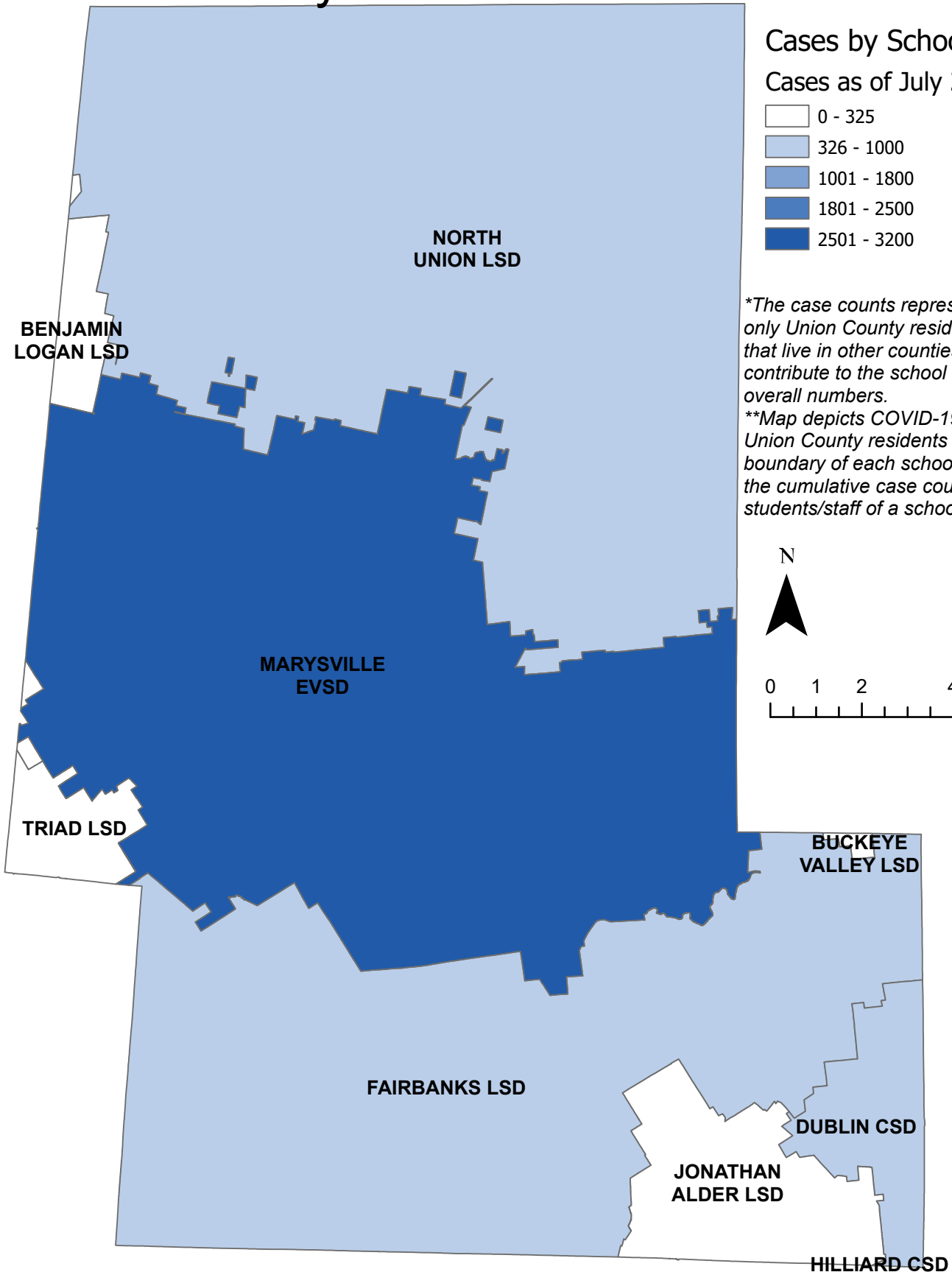
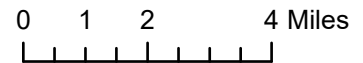
Cases by School District

Cases as of July 29, 2021

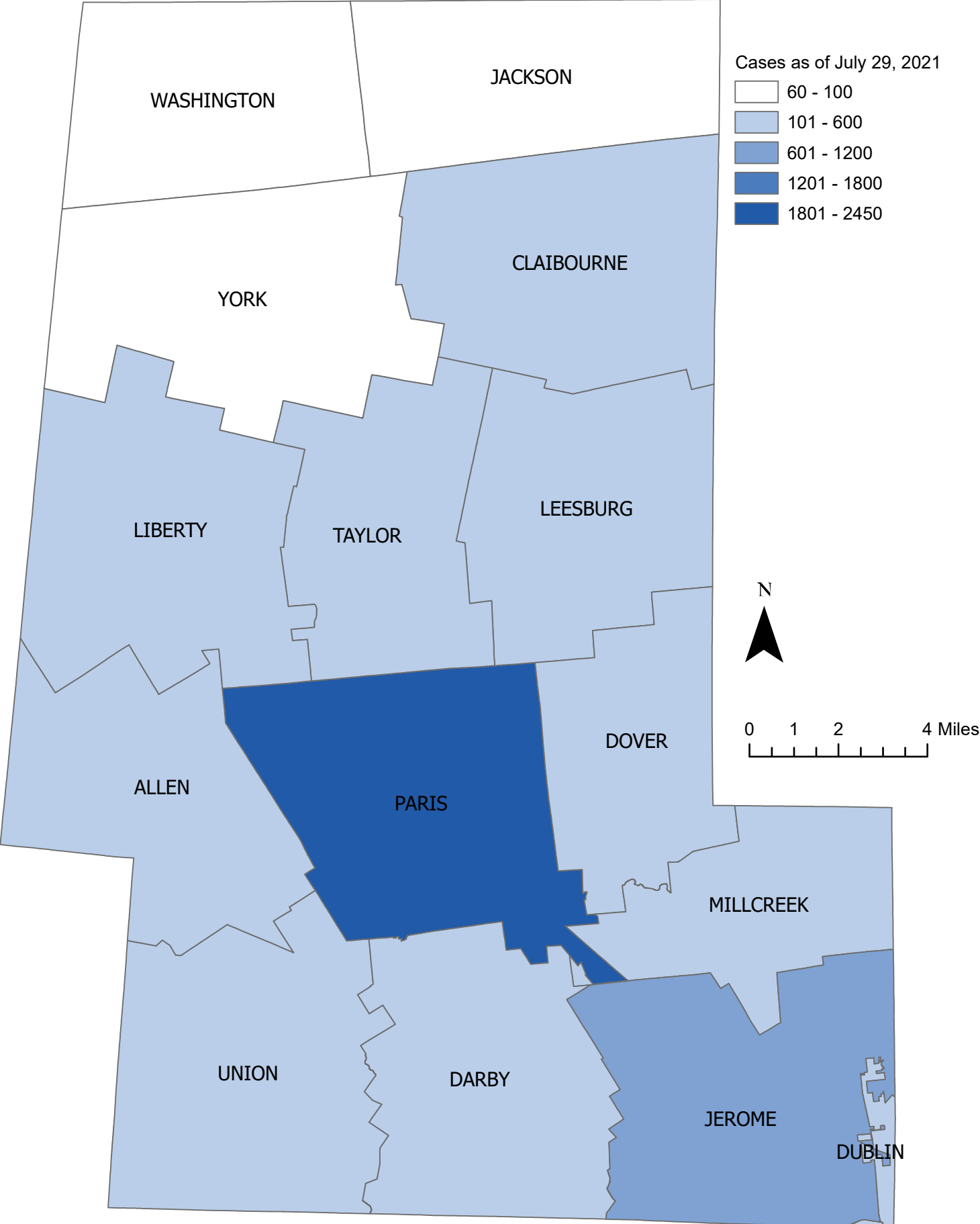


**The case counts represented are only Union County residents. Cases that live in other counties may contribute to the school districts overall numbers.*

***Map depicts COVID-19 cases among Union County residents by the geographic boundary of each school district. It is NOT the cumulative case count for students/staff of a school district.*



Union County Cumulative COVID-19 Cases by Township of Residence



To be released from isolation a person must meet the following criteria:

1. Be fever free for at least 24 hours without the use of medicine that reduces fevers
-AND-
2. Have improvement of symptoms (for example, cough or shortness of breath have improved)
-AND-
3. At least 10 days have passed symptoms first began

For more information please visit: <https://www.cdc.gov/coronavirus/2019-ncov/if-you-are-sick/end-home-isolation.html>

Case Definitions:

Probable: includes the following:

- Individuals experiencing symptoms of COVID-19 who have either traveled to an area experiencing community spread or who are a contact of a laboratory confirmed case
-OR-
- Individuals with a positive antigen result via a test authorized by an FDA under an emergency use authorization

Confirmed: individuals with laboratory confirmation of COVID-19, which is detection of SARS-CoV-2 RNA in a clinical or autopsy specimen using a molecular amplification detection test

For more information please visit: https://cdn.ymaws.com/www.cste.org/resource/resmgr/2020ps/interim-20-id-01_covid-19.pdf

Recovered: individuals who are no longer experiencing symptoms or have had improvement of symptoms and who have been released from isolation

